

600 Childowla Road Site Plan

Aerial shot of the proposed house site.

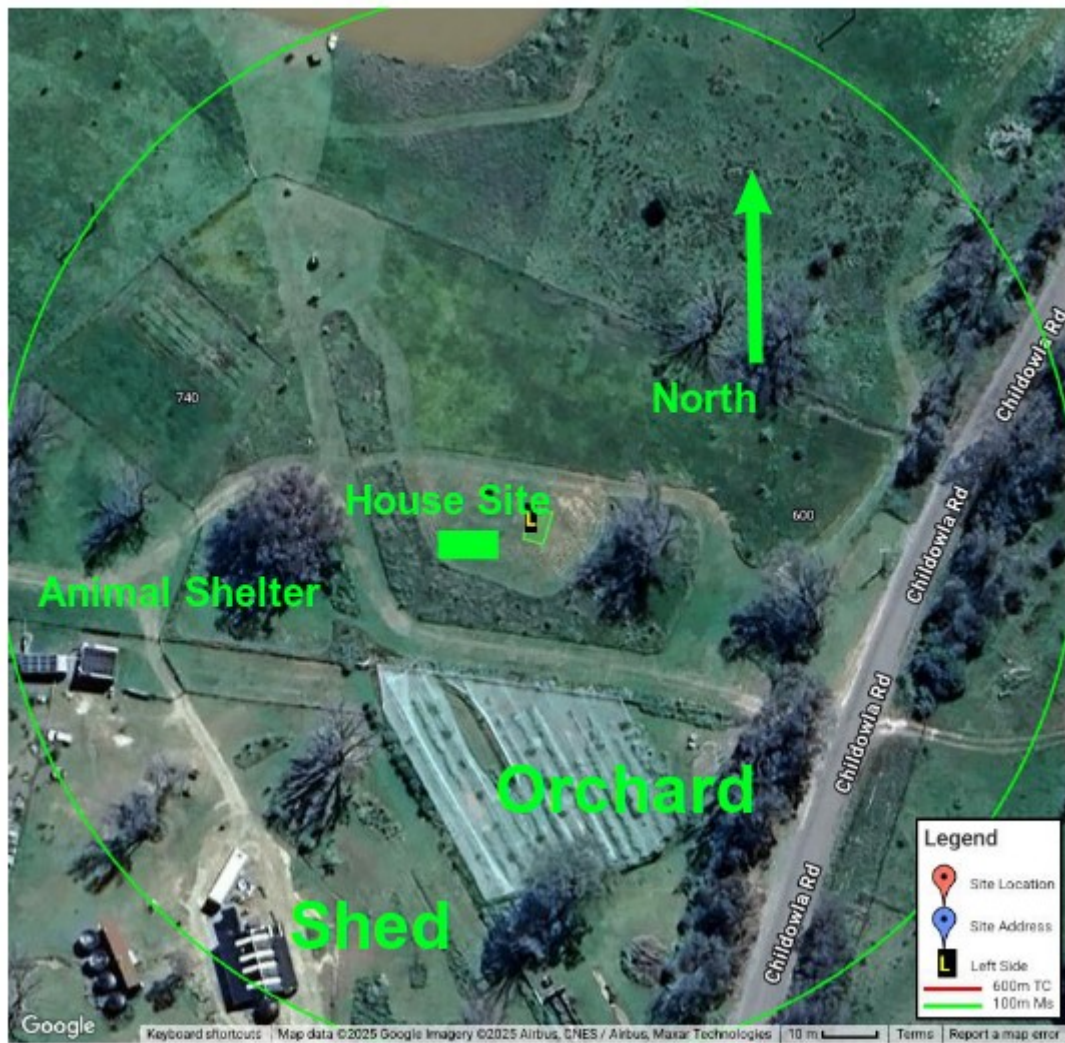


Diagram
Scale 2 Ch's to an In.

RES. RP 100 WD
Barber's Cr.
Tulino Cr.
A
X (x to A)
90° 22' 26.12
73° 54'
224.3
316.23
RES. ROAD
100 WD
D
Y
138.5
GUM
S
6.1
Pipe
2.29
E
352° 38' G. 1 Pipe 2.29

Offset Area - .295 acs.

REFERENCE MARKS

CORNER	BEARING	FROM	LINKS	N° ON TREE
A	61° 42'	Gum	130.6	218
B	290° 41'	Large Gum	28.9	218
C	215° 01'	Gum	47.6	218
D	237° 33'	Dead Tree	34.0	218
Y	352° 26'	G. 1 Pipe	2.29	
E	352° 38'	G. 1 Pipe	2.29	

NOTATION PLAN

I CERTIFY that this is a CORRECT COPY of the original plan of survey and of all notations thereon now relevant, it being the official having the custody thereof.

[Signature]
Miner in Charge,
Land Board Office.

Surround area: 26.62808 acs

SCALE 4 CHAINS TO AN INCH

CAT. N° H-7180-1716

CORNER	BEARING	FROM	LINKS	N° OF TREE
A	61°42'	Gum	130.6	218 ↑
B	290°41'	large Gum	28.3	218
C	215°01'	Gum	47.6	218
D	237°33'	dead Tree	34.0	218
Y	352°26'	G.I. Pipe	2.29	
E	352°38'	G.I. Pipe	2.29	

I CERTIFY that this is a
CORRECT COPY of the
original plan of survey and
of all notations thereon now
relevant, being the officer
having the custody thereof.

James D. O'Connell
Officer in Charge,
Land Board Office.

Surround area:- 26.62808acs

AZIMUTH TAKEN FROM X:Y
FIELD BOOK L D 3249 PAGES 1-3

Lithographed & Printed at the Dept of Lands, Sydney, N.S.W.
Assessed £2.2.6

NOTATION PLAN

29.3.56
Dovalland
M. J. J. J.

SCALE 4 CHAINS TO AN INCH

CAT. N° *H7180-1716*